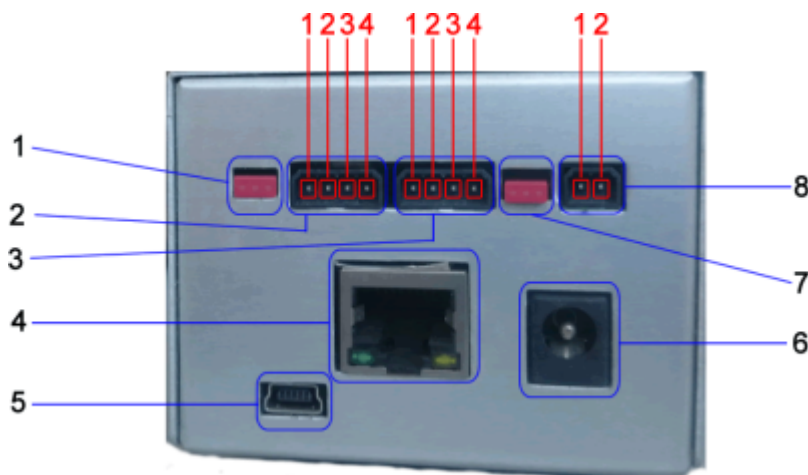


# Installation

24V/1A DC is required to power converter. Standard consumption is lower, but switched-mode power supply requires high inrush current.

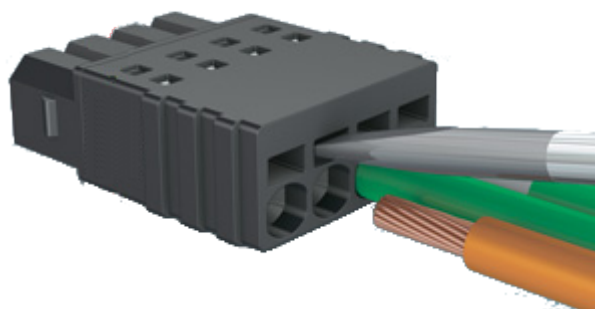
## Peripherals description



- 1. Jumper - RS485 terminator
- 2. RS 485 [C-bus] connector
- 3. RS 232/MMI connector
- 4. Ethernet
- 5. USB Slave
- 6. **Do not connect**
- 7. Jumper - MMI power supply bridge between RS 232 DB9 and port 3.
- 8. Power supply 24V DC

### RS 485 connector

- 1. **Shielding**
- 2. **A+**
- 3. **B-**
- 4. **GND**



### RS 232 connector

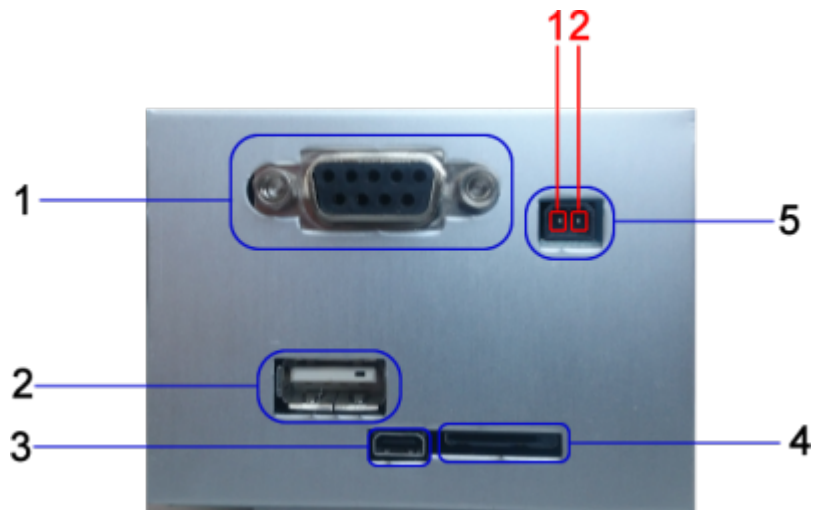
- 1. **GND**
- 2. **MMI power**
- 3. **TxD**
- 4. **RxD**

### Power supply 24V DC

- 1. **-24VDC**
- 2. **+24VDC**



With reverse polarity protection



- 1. RS 232 DB9
- 2. USB Host
- 3. HDMI **Do not connect**
- 4. Micro SD slot
- 5. M-Bus

### M-Bus connector

- 1. M-Bus
- 2. M-Bus



With protection against overvoltage and short circuit



In the event of prolonged short-circuit situation, converter will reduce output voltage. To restore converters function it is required to break converters power supply.

## Linux COM port names

```
RS485 - /dev/tty05
M-Bus - /dev/tty04
RS232 DB9 - /dev/tty01
RS232 MMI - /dev/tty02
```

## First run



From factory settings, converters IP address is set to **192.168.0.202**. You will be able to connect to converter by setting your IP address in range **192.168.0.XXX** with net mask set to **255.255.255.0**

Converter requires about 1 minute to start all services with web interface. Web interface should be accessible on web address <http://192.168.0.202>

Login page will be displayed after successful connection.

Default credentials are:

Username: **root**

Password: **123**

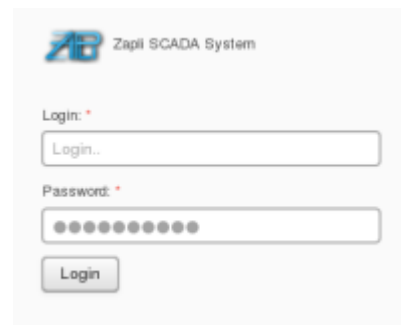
By pressing **Login** button you will log in.



It is recommended to immediately change default password, especially when device is visible on public network

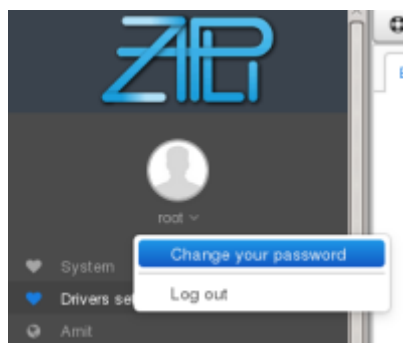


Credentials to web interface are identical with credentials used for ssh.



## Changing password

You can change your password by clicking on your username located in menu below logo. Small context menu should pop up with option to **Change password**.



## Changing system language



## Integrated helper



You can also access integrated helper by directly accessing following links, each for different language:

<converters IP>/wiki/sk/blacky\_max.html

<converters IP>/wiki/en/blacky\_max.html

<converters IP>/wiki/de/blacky\_max.html

From:

<https://wiki.apli.sk/> - **Wiki**

Permanent link:

<https://wiki.apli.sk/doku.php?id=en:blacky-install>

Last update: **2018/02/23 21:29**

